

# Grundriss

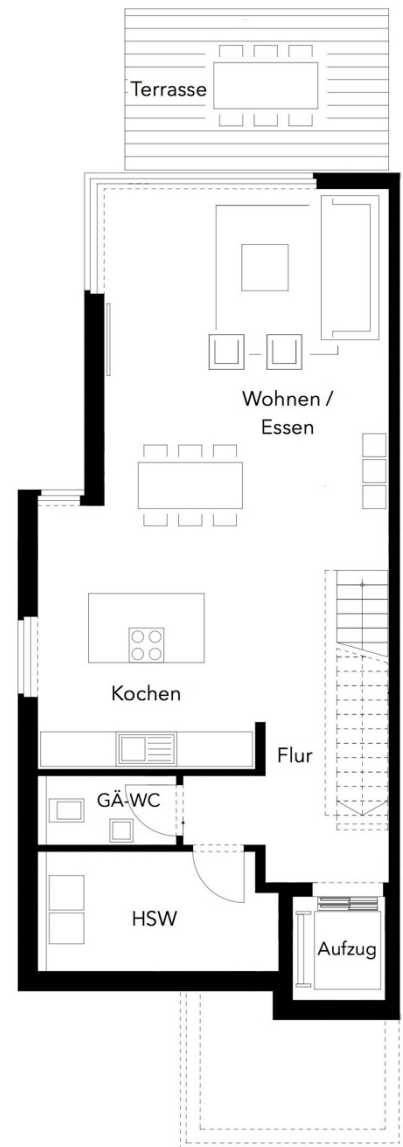
## 2. Doppelhaushälfte

**200,13 m<sup>2</sup>**

**76,18 m<sup>2</sup>**

Erdgeschoss

Wohnen/Essen	37,91 m <sup>2</sup>
Kochen	12,88 m <sup>2</sup>
GÄ- WC	2,64 m <sup>2</sup>
HSW	8,07 m <sup>2</sup>
Flur	9,84 m <sup>2</sup>
Terrasse	4,84 m <sup>2</sup>



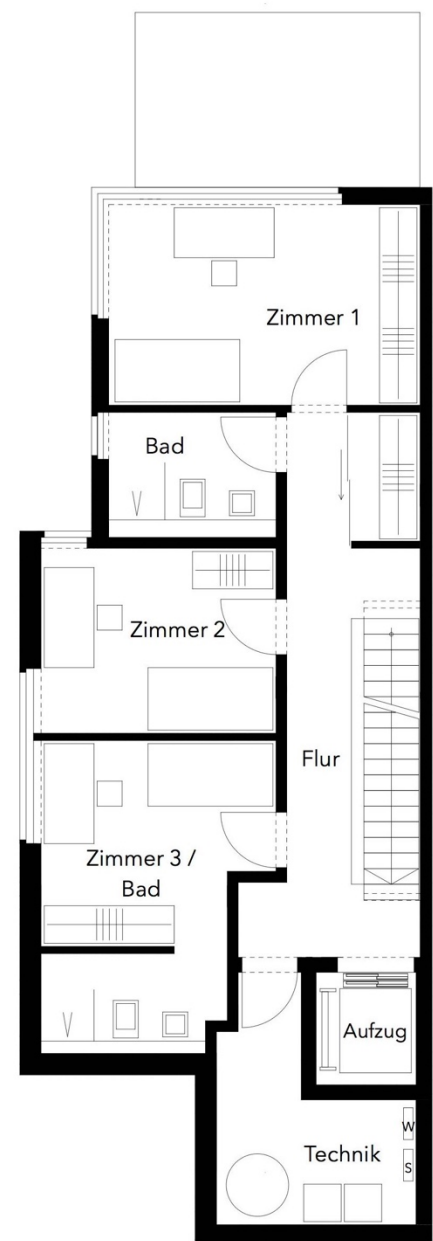
# Grundriss

## 2. Doppelhaushälfte

**62,47 m<sup>2</sup>**

### 1. Obergeschoss

Zimmer 1	16,02 m <sup>2</sup>
Zimmer 2	11,22 m <sup>2</sup>
Zimmer 3 / Bad	15,56 m <sup>2</sup>
Bad	4,8 m <sup>2</sup>
Flur	14,87 m <sup>2</sup>
(Technik)	8,84 m <sup>2</sup>



# Grundriss

## 2. Doppelhaushälfte

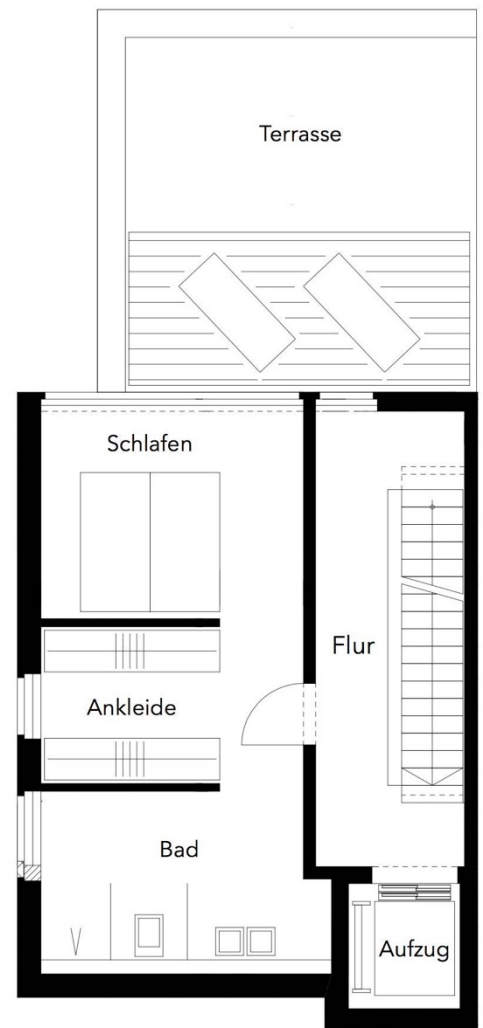
---

**46,71 m<sup>2</sup>**

### 2. Obergeschoss

---

Schlafen	11,22 m <sup>2</sup>
Ankleide	8,30 m <sup>2</sup>
Masterbad	9,55 m <sup>2</sup>
Terrasse	8,07 m <sup>2</sup>
Flur	9,57 m <sup>2</sup>



# Grundriss

## 2. Doppelhaushälfte

---

**14,77 m<sup>2</sup>**

### 3. Obergeschoss

---

Eingang/Garderobe      14,77 m<sup>2</sup>

